

CHAPTER 7: Internet Browsing and Shortcuts

Introduction:

Bayanihan Linux does not only enable you to browse and manage your local files, it also connects you to the World Wide Web.

In this chapter you will learn how to connect your computer to the Internet and we will be using the Konqueror Web Browser in doing this. We have used Konqueror in our previous exercises. More than a file manager, it is also an effective web browser.

In this chapter, you will learn how to:

- Configure Konqueror to connect to the Internet.
- Browse the Internet.
- Use shortcuts available in the Konqueror Web Browser.

Situation:

You were asked by your computer laboratory teacher to submit a research paper on operating systems. Your teacher noted that you must include in the discussion the categories of operating systems and how operating systems works.

Your teacher said that the Internet is a good resource in doing your research so he gave you the proxy settings that you will need in configuring your web browser:

proxy: <http://proxy.bayanihanlinux.edu.ph>

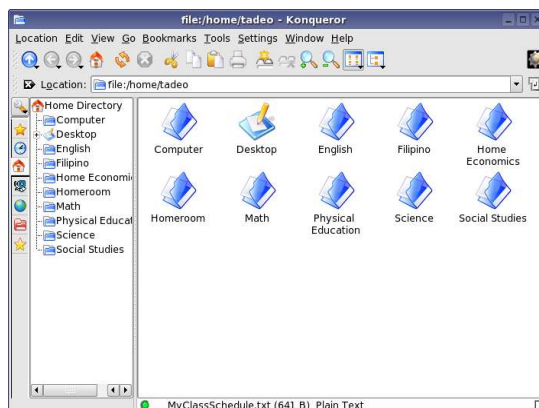
port: 3128

Tasks:

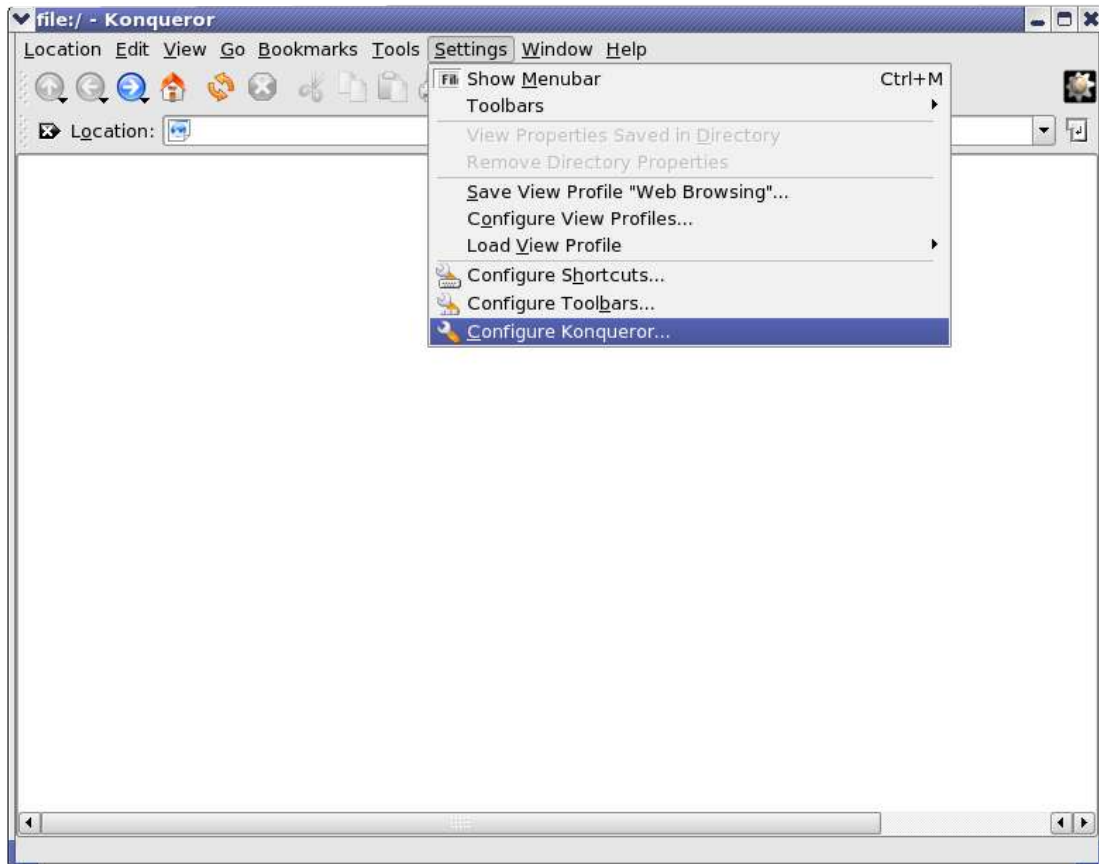
1. Take note of the proxy settings given by your teacher.
2. Configure your web browser.
3. Browse the Internet for references.
4. Use available browser shortcuts in searching for references.

Solution:

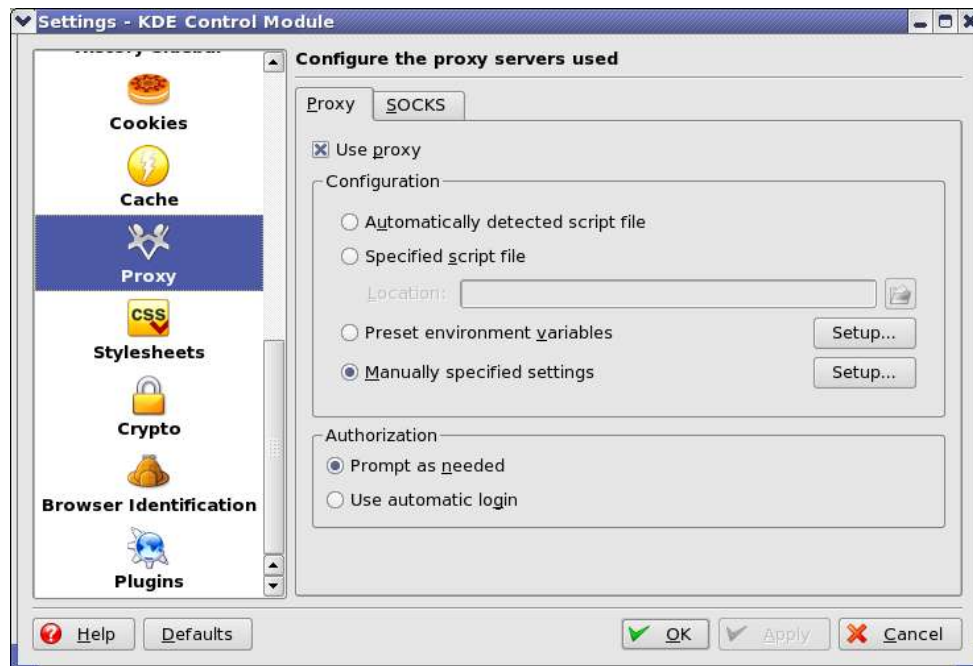
1. Login in your account. Taking note of the proxy settings provided by your teacher, open the *Home* icon in your desktop. This will launch Konqueror. We have previously used Konqueror as a file manager, this time we will be using it as a web browser.



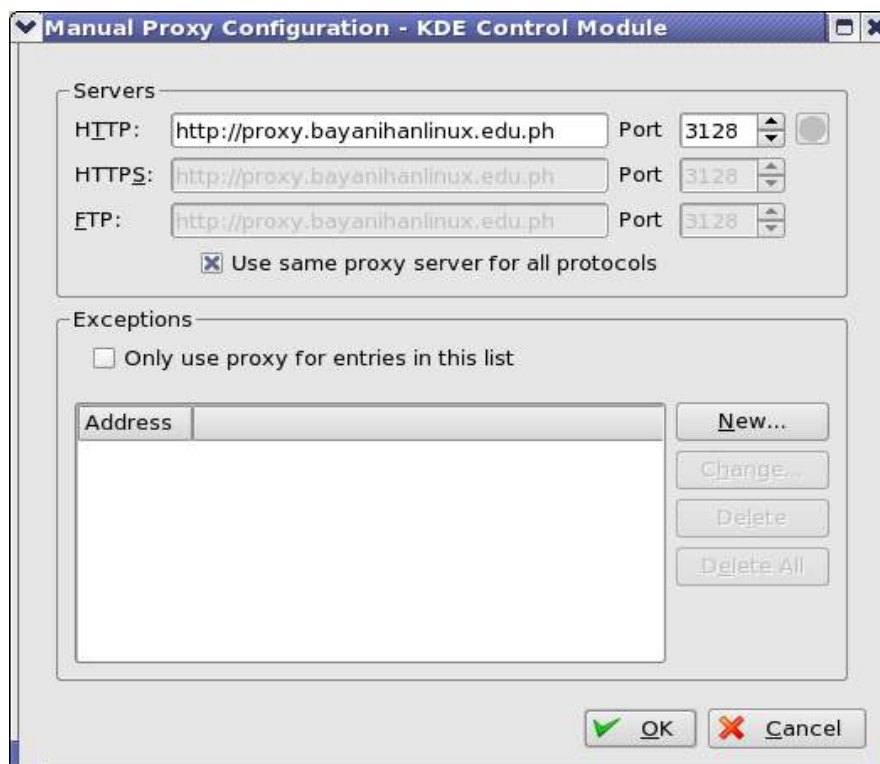
2. We will need to setup the proxy settings of Konqueror to enable it to connect to the Internet. From the menu, click *Settings->Configure Konqueror*. This will launch the “Settings - KDE Control Module” for Konqueror.

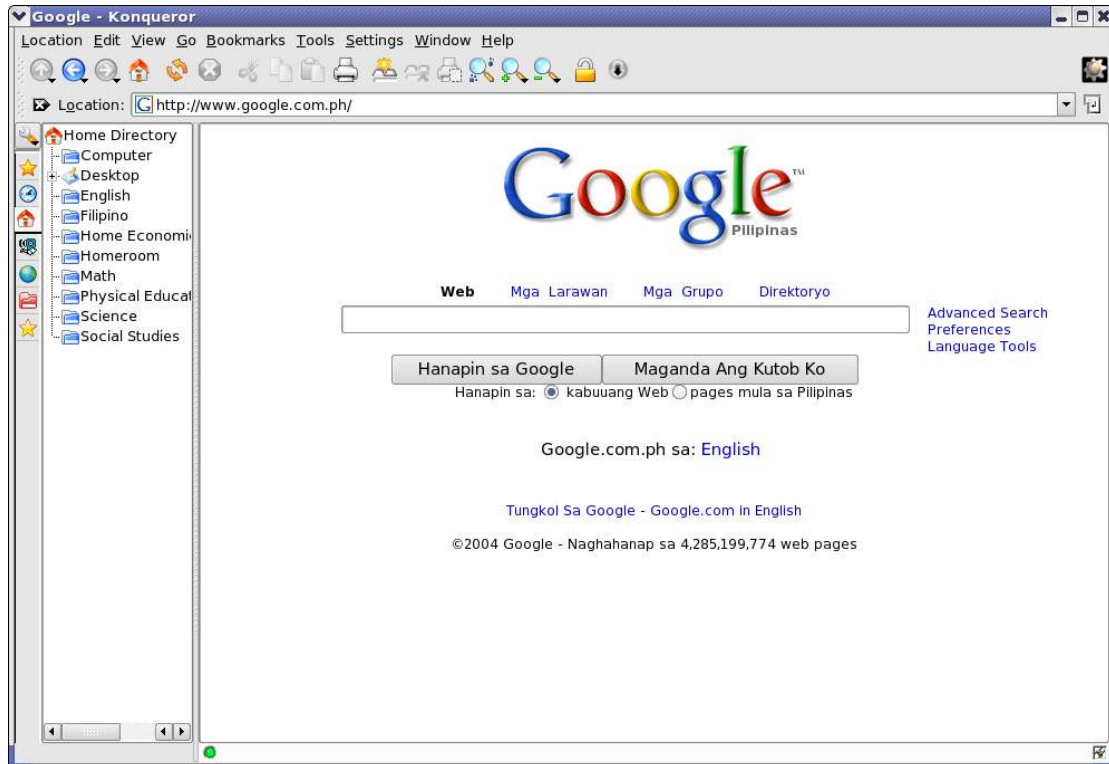


- Use the slide bar in the left frame to go to the *Proxy* entry. On the *Proxy* tab select “Use proxy” and select “Manually specified settings” in the “Configure the proxy servers used” frame.



- Click the “Setup...” button to manually configure the proxy. Select “Use same proxy server for all protocols”. This will automatically use the same proxy address in the protocols. Enter <http://proxy.bayanihanlinux.edu.ph> in the “HTTP:” text entry and 3128 on “Port”. Click “OK” button to save the settings. On the “Settings - KDE Control Module” main panel, click “Apply” to apply the changes and “OK” to exit.

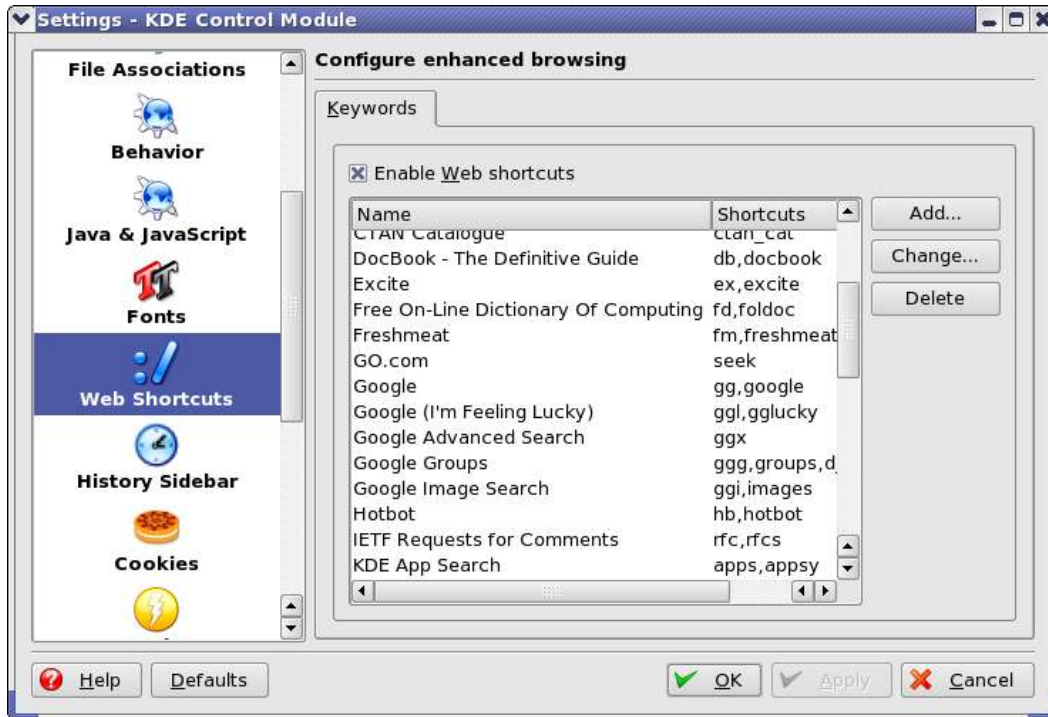




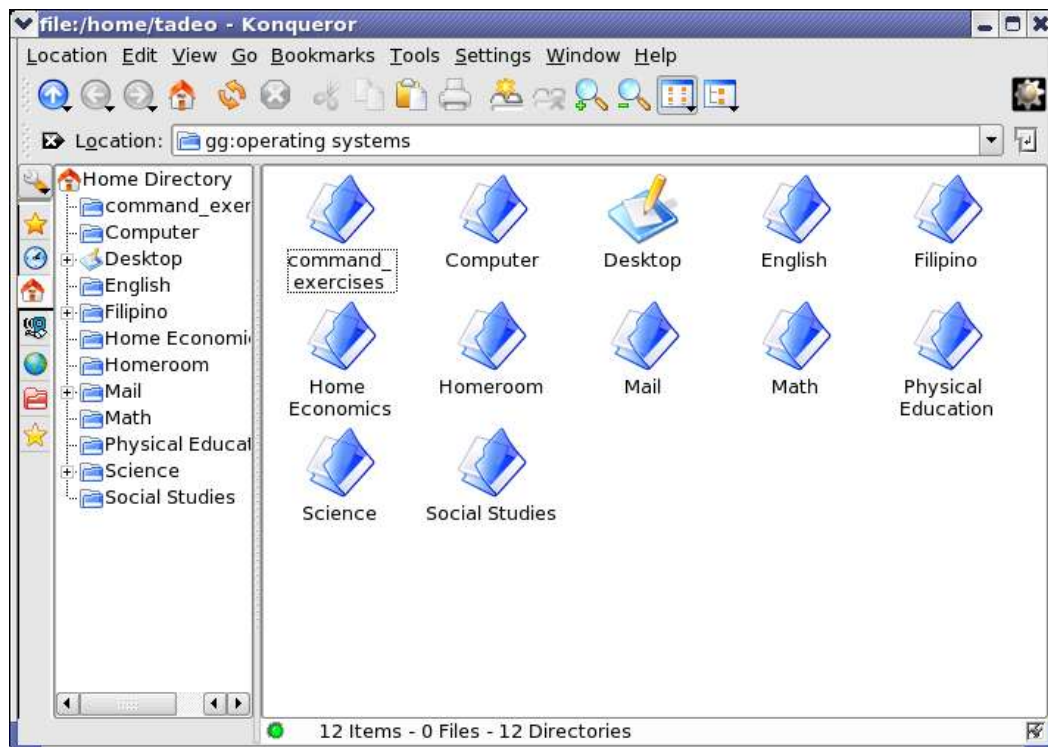
5. Once you have configured your Internet connection, you are ready to get online. In the "Location" bar, type <http://www.google.com.ph> and press enter to connect to the webpage.
6. You can navigate the webpage using your mouse and keyboard. To scroll up and down a webpage, click the the scroll bar on the right side of the browser window as you drag the mouse up and down. You can also press the arrow keys on your keyboard to move up and down the webpage. To stop a page from loading, click the "Stop" button on the toolbar. If you want to load any new webpage, just type the new URL in the "Location" bar and press 2enter.

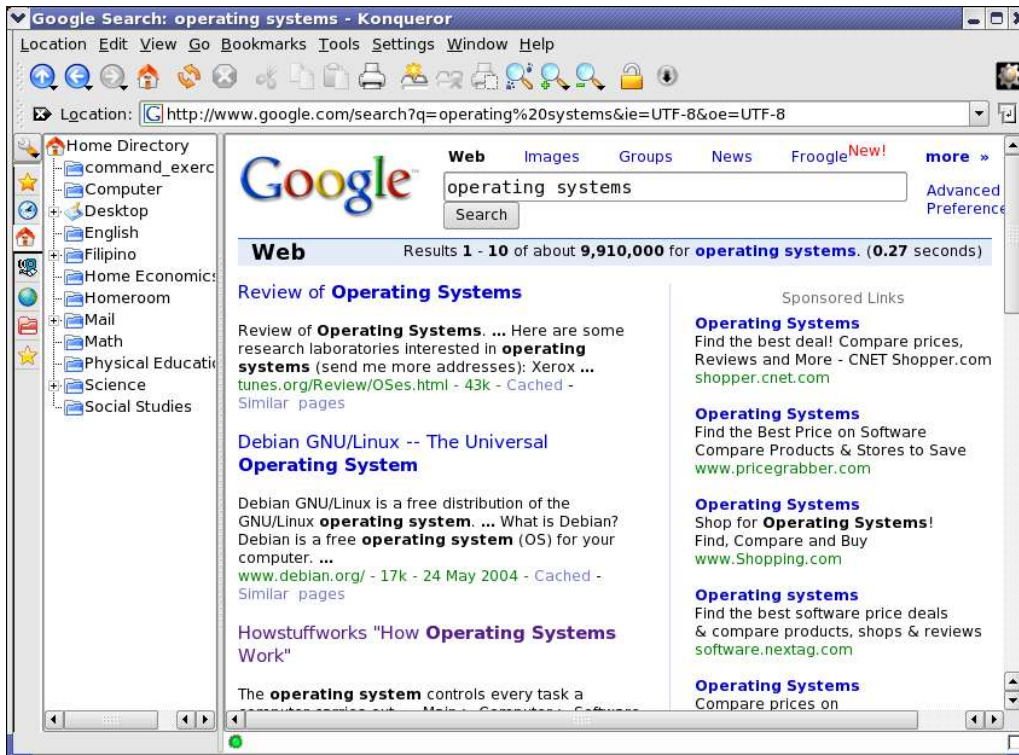
To move back to a previously loaded webpage or move forward to a recently loaded page, click the "Back" and "Forward" buttons or press and the left or right arrow key to move backward or forward one webpage, respectively.
7. Konqueror also allows you to load multiple pages within one browser window. This is very useful if you don't want clutter on your desktop or switch between various folders/webpages often. Konqueror uses tabs to accomplish loading multiple pages in one window. To open a link in a new tab, right-click the link and choose *Open in New Tab* (or *Open in Background Tab* if you want to keep your current tab on top). The tabs appear with the header of the webpage displayed for easy reference. Click the tab of the webpage you want to display. To close a tab, right-click on the tab and choose *Close Tab* from the menu.
8. Konqueror offers some features to enhance your browsing experience and make your Internet browsing a little easier and more enjoyable. Currently, one such features is web shortcuts. Web shortcuts are pseudo URL schemes, or shortcuts, that basically parameterize commonly used URLs. To see the currently available

shortcuts in Konqueror, click *Settings->Configure Konqueror* and select *Web Shortcuts* in the panel. The main panel will show you the name of the web pages with shortcuts.



9. For example, if you like the Google search engine, you can use *gg:operating systems* (shortcut:<keyword>) to search for the keywords *operating systems* on Google.





Summary:

You are now able to:

- Configure your web browser to connect to the Internet
- Browse the Internet
- Use shortcuts available in the Konqueror Web Browser.